

The innovative Kore Design™ Wobble Chair encourages active sitting and allows one's knees, hips and back to find comfortable and ever-changing positions.

### Award-Winning Active Chairs



#### Pre-School Wobble Chair 12"

Age 4-5; PK-K; Height 40"-43"

KOR121	6-32201-10121-9
KOR122	6-32201-10122-6
KOR123	6-32201-10123-3
KOR124	6-32201-10124-0
KOR125	6-32201-10125-7
KOR126	6-32201-10126-4
KOR128	6-32201-10128-8
KOR129	6-32201-10129-5
KOR130	6-32201-10130-1

MSRP: \$65.99

Rocking Base with  
Anti-Tip Ring

#### Kids Wobble Chair 14"

Age 6-7; Grade 1-2; Height 45"-48"

KOR112	6-33726-09112-2
KOR113	6-33726-09113-9
KOR115	6-33726-09115-3
KOR116	6-33726-09116-0
KOR117	6-33726-09117-7
KOR590	6-16932-10590-6
KOR599	6-16932-10599-9
KOR600	6-16932-10600-2
KOR603	6-32201-10603-0
KOR604	6-32201-10604-7
KOR605	6-32201-10605-4

MSRP: \$77.99

#### Junior Wobble Chair 16"

Age 8-9; Grade 3-4; Height 50"-53"

KOR610	6-16932-10610-1
KOR611	6-16932-10611-8
KOR612	6-16932-10612-5
KOR613	6-16932-10613-2
KOR614	6-16932-10614-9
KOR617	6-32201-10617-7
KOR618	6-32201-10618-4
KOR619	6-32201-10619-1

MSRP: \$89.99

#### Pre-Teen Wobble Chair 18.7"

Age 10-11; Grade 5-6; Height 54"-57"

KOR588	6-16932-10588-3
KOR589	6-16932-10589-0
KOR597	6-16932-10597-5
KOR598	6-16932-10598-2
KOR918	6-33726-09118-4
KOR919	6-32201-09119-0
KOR920	6-32201-09120-6
KOR921	6-32201-09121-3

MSRP: \$101.99



### Active Sitting Benefits

**Outlet for High Energy**  
Provides an outlet for children with high energy and sensory seating for ADD, ADHD or Autism.

**Perfect for Activities**  
Homework, reading, drawing, eating or board games are no longer sedentary activities.

**Ideal for All Children**  
Available in multiple sizes and colors and holds up to 275 lbs (125 kg)

**Increase Secondary Focus**  
Continuous movement while sitting relaxes the right side of the brain, leading to better focus.

**Stable Base**  
Gentle-rounded base moves with child and comes to rest naturally upright.

**Anti-Tip Safety**  
A patented Anti-Tip Safety Ring on the base prevents tip-overs and falls. An optional rubber pad is included for anti-skid or anti-marking.

**Limited Lifetime Warranty**  
Satisfaction guaranteed with a Limited Lifetime Warranty on Kore Design™ wobble chairs.

**NEW for 2024  
Calming Colors**



### NEW for 2024 Calming Colors



3 Colors in  
Various Heights

### Reduced Stress and Anxiety

Calming colors can help create a soothing or relaxed atmosphere for both students and teachers.

### Muted or Light Blues

Often associated with calmness and tranquility and lend to creating a serene environment.

### Balanced Energy Levels

Certain calming colors neither overstimulate or cause fatigue, and help promote a positive attitude.

### Tans and Light Beiges

Considered balanced and neutral tones, these colors contribute to a visually appealing backdrop.

### Improved Focus and Concentration

Creating a peaceful and neutral setting can elevate attentiveness in learning settings.

### Muted or Light Greens

Linked to nature, greens offer both calming and refreshing qualities in the classroom.

#### Kids Adjustable Standard Wobble Chair 14"-19"

Age 6-11; Grade 1-6; Height 45"-57"

KOR3100	6-32201-03100-4
KOR3101	6-32201-03101-1
KOR3102	6-32201-03102-8
KOR3103	6-32201-03103-5
KOR3104	6-32201-03104-2
KOR3105	6-32201-03105-9
KOR3106	6-32201-03106-6
KOR3107	6-32201-03107-3
KOR3109	6-32201-03109-7
KOR3110	6-32201-03110-3
KOR3111	6-32201-03111-0

MSRP: \$149.99

#### Kids Adjustable Tall Wobble Chair 16.5"-24"

Age 9-14; Grade 4-9; Height 52"-64"

KOR2112	6-16932-02112-1
KOR2113	6-16932-02113-8
KOR2115	6-16932-02115-2
KOR2116	6-16932-02116-9
KOR2117	6-16932-02117-6
KOR2560	6-16932-02560-0
KOR2590	6-16932-02590-7
KOR2599	6-16932-02599-0
KOR2601	6-32201-02601-7
KOR2602	6-32201-02602-4
KOR2603	6-32201-02603-1

MSRP: \$154.99



**NEW for 2024  
Calming Colors**





**Kids Adjustable Pivot Stool Small (13" to 17")**

Age: 6-9 ; Grade 1-4; Height: 44"-52"

- KDAP-2024WH 6-32201-11300-7
- KDAP-2024WK 6-32201-11301-4
- KDAP-2024WL 6-32201-11302-1

MSRP: \$239.99

**Kids Adjustable Pivot Stool Tall (16.5" to 21")**

Age: 9-13 ; Grade 3-8; Height: 54"-64"

- KDAP-2524WH 6-32201-11310-6
- KDAP-2524WK 6-32201-11311-3
- KDAP-2524WL 6-32201-11312-0

MSRP: \$239.99



**Replacement Covers Plain**

- KDAPSC-A2G 6-32201-11900-9
- KDAPSC-A2H 6-32201-11901-6
- KDAPSC-A2J 6-32201-11902-3
- KDAPSC-A2K 6-32201-11903-0
- KDAPSC-A2L 6-32201-11904-7
- KDAPSC-A2M 6-32201-11905-4
- KDAPSC-A2N 6-32201-11906-1
- KDAPSC-A2P 6-32201-11907-8

MSRP: \$TBD

**Replacement Covers Sleepy Eyes**

- KDAPSC-B2G 6-32201-11908-5
- KDAPSC-B2H 6-32201-11909-2
- KDAPSC-B2J 6-32201-11910-8
- KDAPSC-B2K 6-32201-11911-5
- KDAPSC-B2L 6-32201-11912-2
- KDAPSC-B2M 6-32201-11913-9
- KDAPSC-B2N 6-32201-11914-6
- KDAPSC-B2P 6-32201-11915-3

MSRP: \$TBD

**Replacement Covers Cheeky Eyes**

- KDAPSC-C2G 6-32201-11916-0
- KDAPSC-C2H 6-32201-11917-7
- KDAPSC-C2J 6-32201-11918-4
- KDAPSC-C2K 6-32201-11919-1
- KDAPSC-C2L 6-32201-11920-7
- KDAPSC-C2M 6-32201-11921-4
- KDAPSC-C2N 6-32201-11922-1
- KDAPSC-C2P 6-32201-11923-8

MSRP: \$TBD



Pull the donut-shaped handle to make adjustments to seat height

Replacement Covers install easily over your existing stool and standard cover. Simply pull the handle through the slot. Then cinch string and tuck it away.



**Social and Emotional Learning (SEL)**

SEL is an educational approach focused on developing students' interpersonal and emotional skills. It emphasizes self-awareness, self-regulation, empathy, and effective communication, fostering a positive and inclusive school environment. SEL programs aim to equip students with essential life skills, such as emotional intelligence and conflict resolution, contributing to improved academic performance. SEL promotes a positive school culture that prepares students to navigate the complexities of the modern world with resilience and empathy.



**Replacement Covers SEL**

- Sad - Blue KDAPSC-D2H 6-32201-11924-5
- Happy - Green KDAPSC-E2J 6-32201-11925-2
- Worry - Yellow KDAPSC-F2K 6-32201-11926-9
- Angry - Red KDAPSC-G2G 6-32201-11927-6
- MSRP: \$TBD
- Set of 4 KDAPSC-H2Q 6-32201-11928-3
- MSRP: \$TBD

**Alternative Seating Formats for daycares, classrooms, libraries and more!**

**Scoop Rocker Set of 4 (21")**

Age 4+; PK+; Height 40"-43"

- KDFR-042100 6-32201-11550-6
- KDFR-042101 6-32201-11551-3
- KDFR-042102 6-32201-11552-0
- KDFR-042103 6-32201-11553-7

MSRP: \$69.99



Floor seating for kids with back support. Includes a anti-tip feature and is lightweight and stackable.

**Floor Wobbler® Balance Disc for Sitting, Standing, or Fitness**

All ages and heights

- KOR4200 6-32201-04200-0
- KOR4201 6-32201-04201-7
- KOR4204 6-32201-04204-8
- KOR4205 6-32201-04205-5

MSRP: \$52.99



The unique Floor Wobbler® allows children to sit comfortably on the floor and remain active in one spot. Ideal for flexible seating classrooms.



**Fidget Kick Bands Latex (10" to 24")**

Ages 6+; Grades 1+

- KDKB-1000 6-32201-11850-7
- KDKB-1001 6-32201-11851-4
- KDKB-1002 6-32201-11852-1
- KDKB-1003 6-32201-11853-8
- KDKB-1006 6-32201-11854-5

MSRP: \$19.99



**Fidget Kick Bands Silicone (10" to 24")**

Ages 6+; Grades 1+

- KDKB-0000 6-32201-11860-6
- KDKB-0001 6-32201-11861-3
- KDKB-0002 6-32201-11862-0
- KDKB-0003 6-32201-11863-7
- KDKB-0006 6-32201-11864-4

MSRP: \$29.99



Fits any chair with front legs. Allows children to fidget with their feet while seated.

The innovative Kore Design™ Wobble Chair encourages active sitting and allows one's knees, hips and back to find comfortable and ever-changing positions.

**SIT, PERCH, STAND.**  
THE PERFECT ALL-AROUND  
OFFICE SEAT

**Office PLUS Everyday  
Chair 18.5-26.75"**

KOR1524  
Black Leather-like  
6-32201-11524-7

KOR1540  
Black Fabric  
6-32201-11540-7

MSRP: \$249.99



**Office PLUS Sit-Stand  
Chair 21.5-32"**

KOR1509  
Black Leather-like  
6-32201-11509-4

KOR1500  
Black Fabric  
6-32201-11500-1

MSRP: \$262.99



**Teen/College  
Active Chair 18-25"**

KOR7600  
Black w/ rubber mat  
6-32201-17600-2

MSRP: \$201.99



**Teen/College Hi-Rise Active  
Chair 21" - 31.5"**

KOR7601  
Black w/ rubber mat  
6-32201-17601-9

MSRP: \$213.99



**Increase Secondary Focus**  
Continuous movement while sitting relaxes the right side of the brain, leading to better focus.

**Stable Base**  
Gentle-rounded, base moves with person and comes to rest naturally upright. Allows rocking movement in all directions.

**Anti-Tip Safety**  
A patented Anti-Tip Safety Ring on the base prevents tip-overs and falls. An optional rubber pad is included for anti-skid or anti-marking.

**Adjustable seat height**  
Adjustable versions allow you to raise or lower with 360° easy-access actuator ring. Variable heights for all sitting environments.

**Limited Lifetime Warranty**  
Satisfaction guaranteed with a Limited Lifetime Warranty on Kore Design™ wobble chairs.



**Office Adjustable  
Wobble Stool  
Tapered Seat (21" to 31")**

■ KDOW-5312BA 6-32201-11006-8  
■ KDOW-5312BB 6-32201-11007-5  
■ KDOW-5312BC 6-32201-11008-2  
MSRP: \$179.99



**Office Adjustable  
Wobble Stool Round  
Curved Seat (22" to 30")**

■ KDOW-5722BA 6-32201-11000-6  
■ KDOW-5722BB 6-32201-11001-3  
■ KDOW-5722BC 6-32201-11002-0  
MSRP: \$179.99



**Office Adjustable  
Pivot Stool  
Square Seat (22" to 30")**

■ KDOP-5652BA 6-32201-11256-7  
■ KDOP-5652BB 6-32201-11257-4  
■ KDOP-5652BC 6-32201-11258-1  
MSRP: \$259.99



**Office Adjustable  
Pivot Stool  
Round Seat (20" to 28")**

■ KDOP-5023BA 6-32201-11250-5  
■ KDOP-5023BB 6-32201-11251-2  
■ KDOP-5023BC 6-32201-11252-9  
MSRP: \$199.99



**Kids Sit-Stand Mobile Student Desk - Adjustable Height from 31" to 38"**



**Kids Sit-Stand Mobile  
Student Desk**

Age 6-11; Grade 1-6; Height 45"-57"

■ KOR5001 6-32201-05001-2  
■ KOR5002 6-32201-05002-9  
■ KOR5004 6-32201-05004-3  
■ KOR5005 6-32201-05005-0  
■ KOR5008 6-32201-05008-1  
MSRP: \$429.99



Transform your space into a hub of active, mixed-use classrooms and healthy, energetic office spaces.

The Sit-Stand Mobile Student Desk helps harness focus, improve posture and boost energy. Early studies have shown that standing children are more engaged and can help them focus.

Kids Sensory Products offer additional dynamic options into the classroom. Help calm or stimulate the senses as needed. Also promotes sensory integration, enhanced fine motor skills, and exploration and curiosity.

### Foam Play Mat for Kids Interlocking Alphabet

Square Pieces (12" x 12")  
Ages 6+; Grades 1+

Alphabet and Numbers Set  
KDFM-3001 6-32201-11703-6  
MSRP: \$34.99



Build fun play mat or block structures while learning numbers and letters.



### Locking Tactile Tiles Assorted Colors

Square Pieces (12" x 12")  
Ages 6+; Grades 1+

Set of 6  
KDKS-1240 6-32201-11704-3  
MSRP: \$69.99



Create a textured floor mat or tile path to stimulate your child's tactile senses. Enhances tactile awareness, observational abilities, and manual dexterity.

### Foam Play Mat for Kids Interlocking Hopscotch

Square Pieces (12.6" x 12.6")  
Ages 6+; Grades 1+

Hopscotch Set  
KDFM-3202 6-32201-11702-9  
MSRP: \$19.99

### Sensory Game Tiles Assorted Sizes and Colors

Round Pieces (10" diameter)  
Ages 6+; Grades 1+

Classic Colors Set  
KDTD-1131 6-32201-11705-0  
Pastel Colors Set  
KDTD-1132 6-32201-11706-7  
MSRP: \$89.99



### Liquid Floor Tiles Assorted Color Disc

Round Pieces (12")  
Ages 6+; Grades 1+

Set of 9  
KDKS-0020 6-32201-11700-5  
MSRP: \$199.99



### Liquid Floor Tiles Assorted Color Squares

Square Pieces (12" x 12")  
Ages 6+; Grades 1+

Set of 9  
KDKS-0220 6-32201-11701-2  
MSRP: \$199.99



Liquid filled tiles that offers Soft Surface Play that stimulates the touch and visual senses. Made of safe non-toxic materials.

### Stackable Toddler Cots (40" x 23" x 7")

Ages 6+; Grades 1+

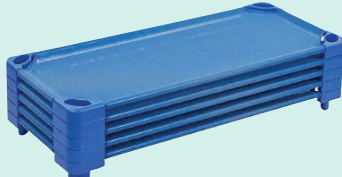
KDKC-4311 6-32201-11600-8  
MSRP: \$54.99



### Stackable Toddler Cots (52" x 23" x 7")

Ages 6+; Grades 1+

KDKC-5311 6-32201-11601-5  
MSRP: \$59.99



Anti-microbial and anti-fungal added the plastic and fabric to allow for easy clean up and storage.

Provides rest time for kids to help improve focus and attention and help regulate children's emotional and physical needs.



Where possible, items are manufactured with an **Anti-Microbial and/or Anti-Fungal** additive that offers broad-spectrum protection and has been tested to reduce up to 99.9% of common bacteria including E. coli, listeria and S. aureus.

Proud Supporter of  
Champion Autism Network



A USA Company



### Kore Design Body Fluid Solidifier

KOR9010 Classroom Size  
0.5 lb (approx 1 qt vol.)  
6-32201-09010-0  
MSRP \$29.99

KOR9011 Custodial Size  
2.65 lb (approx 1 gal vol.)  
6-32201-09011-7  
MSRP \$59.99



Exclusive blend of all-natural solidifier and absorbent with odor eliminating thyme oil.

Quickly encapsulates organic fluids such as blood, urine, vomit, feces and mucus and assists in the elimination of odor at the same time.